

[HOME](#)[LOG IN](#)[YOUR CART](#)[CHECK OUT](#)[SERVICE](#)[ABOUT US](#)[Advanced](#)

**New Item**

SOS TurboFlare

### Custom Cable Assemblies

Build Your Own Cable!

### Cable Assemblies

- Unshielded Jumpers
- Shielded Patch Cords
- Power\_Cords
- Mini\_DIN
- Coaxial
- Audio\_Extension

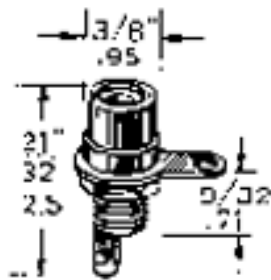
### Connectors

- RCA
- UHF\_Coaxial
- Standard\_MIC
- Primary\_Power\_Receptacles
- Miniature\_Audio
- Gold\_Audio
- DC\_Power

### Jacks and Plugs

- Test\_Probes
- Phono\_Plugs
- Phono\_Jacks
- Phone\_Plugs\_Subminiature
- Phone\_Plugs\_Standard
- Phone\_Plugs\_Miniature
- Phone\_Jacks\_Subminiature
- Phone\_Jacks\_Standard
- Phone\_Jacks\_Miniature
- Phone\_Jacks\_In-Line
- DIN\_Receptacles
- DIN\_Plugs
- Binding\_Posts

## Phono\_Jacks

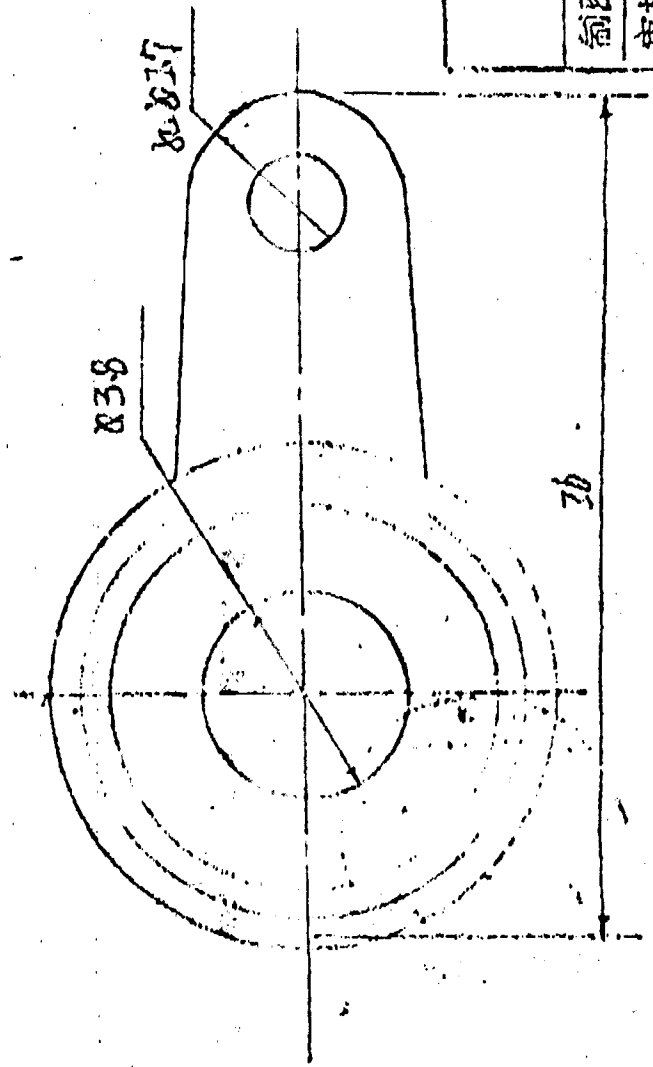
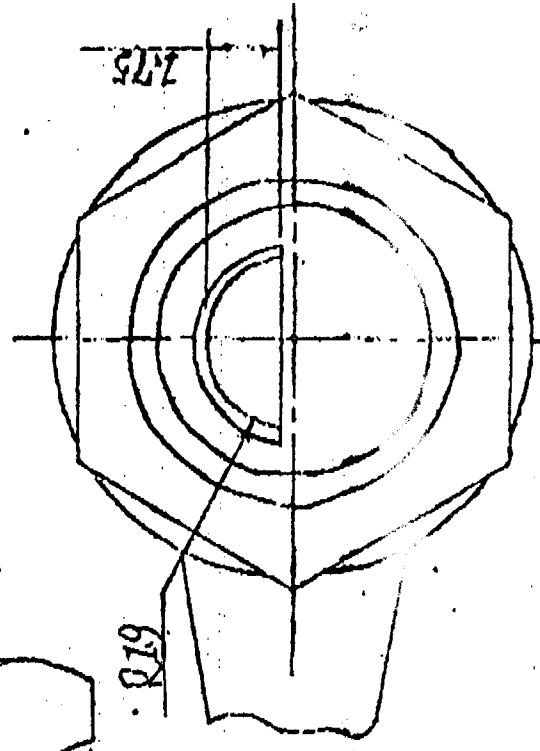
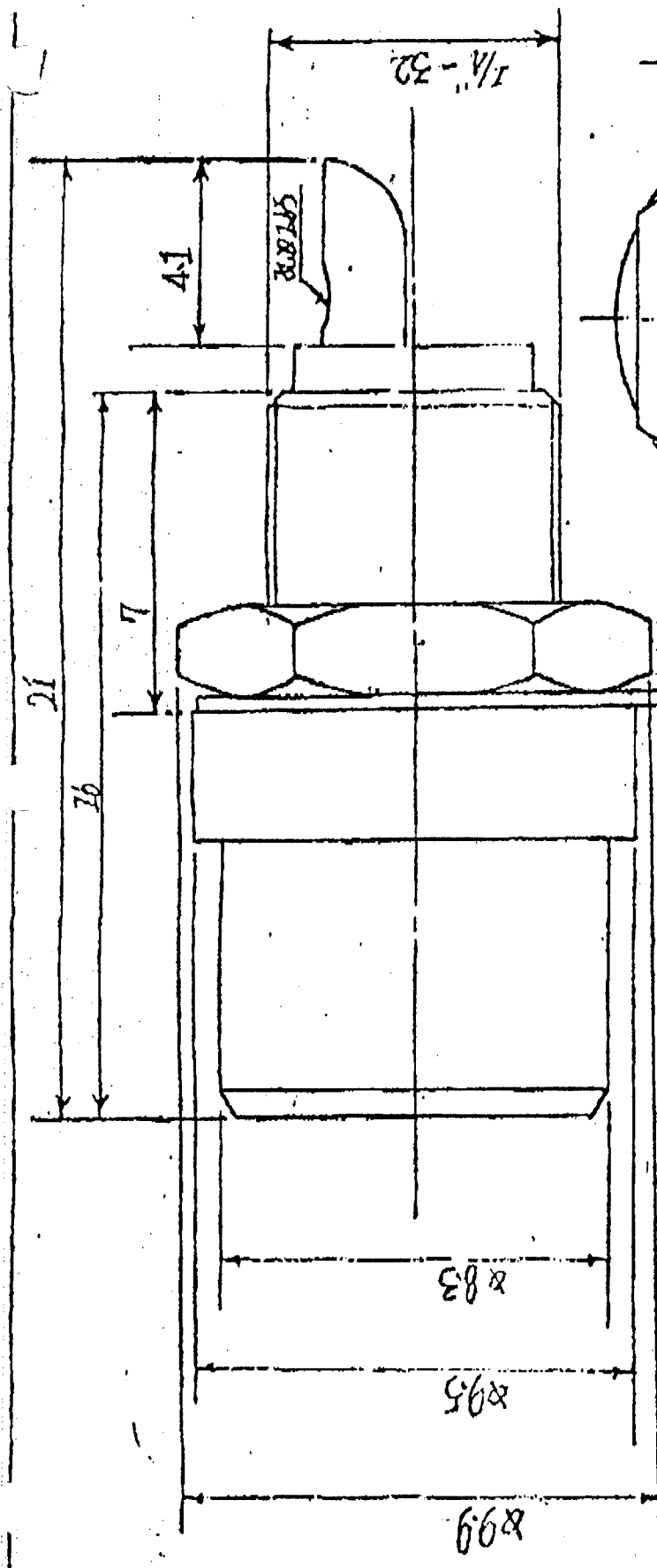


*"Phono jack, front mount in 3/8" hole"*

[View schematic](#)

Quantity:

White thermoplastic insulation. Nickel-plated brass and brass springs for long life and trouble free plug mating. Extra heavy duty insulators prevent breakdowns.



JR-1611	比例	重量	共	張	NO.
	7:1	355g	第	張	
制圖	[Signature]				
審核	[Signature]				

231-1021 / 231-1022 RCA Jack Chassis Mount